



# Secure-Trim Single – Installation Notes For Setting

Secure-Trim Cat. # ST1

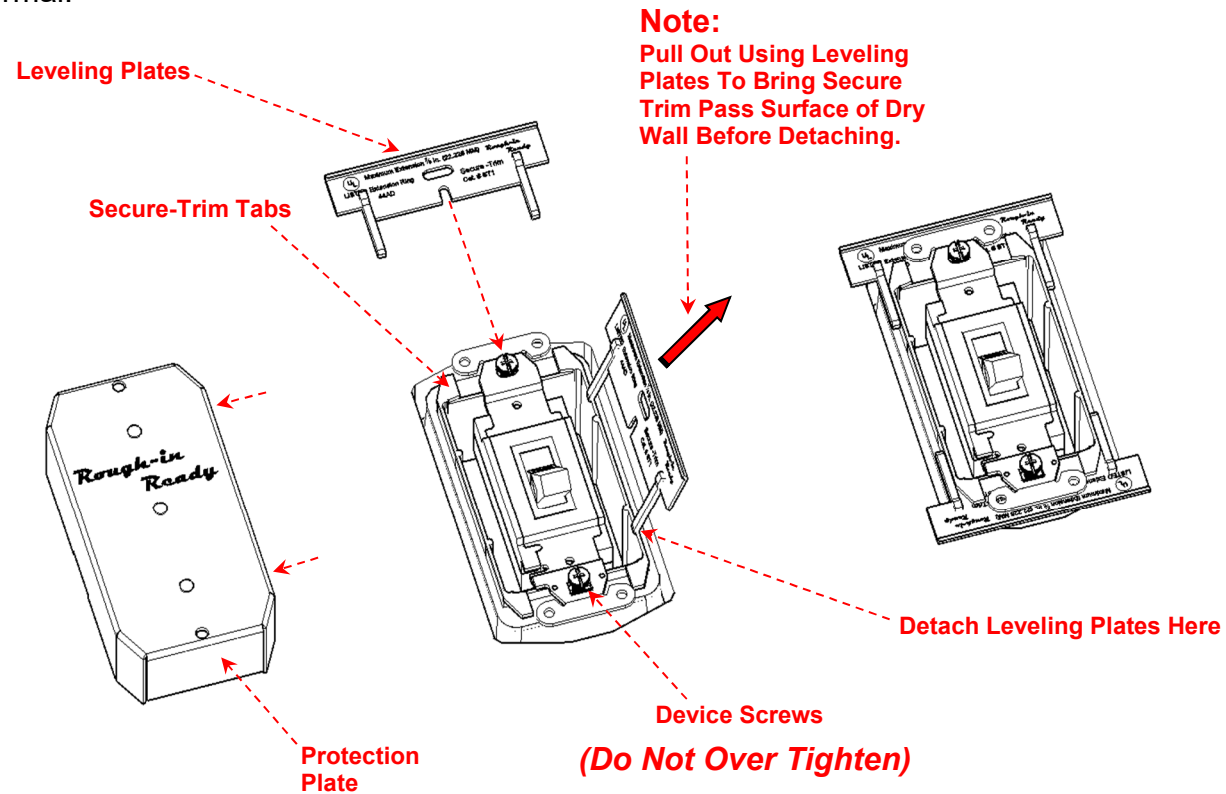
1-800-286-9601 @ www.roughinready.com



Extension Ring  
44AD

## To Level Device With Secure-Trim

1. Remove **Protection Plate**.
2. Adjust **Device Screws** out evenly to bring **“Device Strap”** above the wall surface if necessary. **NOTE:** Secure-Trim will add up to 7/8 of an inch to a 5/8”, 3/4” or a 1-1/4” plaster ring.
3. Detach **Leveling Plates** from **“Secure-Trim”** and slide each **Leveling Plate** behind **“Secure-Trim” Tabs** until the **Device Screw** is seated all the way into the slot of the **Leveling Plate**.
4. Adjust **Device Screws** until the **“Secure-Trim”** is flush and level with the wall surface. **(Do Not Over Tighten)** Leveling Plates should be flat and parallel with wall surface.
5. Install device cover as normal.



### NOTE:

- Box extender is not to be used to secure any other product.
- Improper grounding can result in a risk of electric shock.
- The device must be properly grounded in accordance with all applicable local codes and ordinances after the box extender is installed. Check with a qualified electrician if you are in doubt as to whether the product is properly grounded.
- The box extender is not for use with an isolated grounding device.